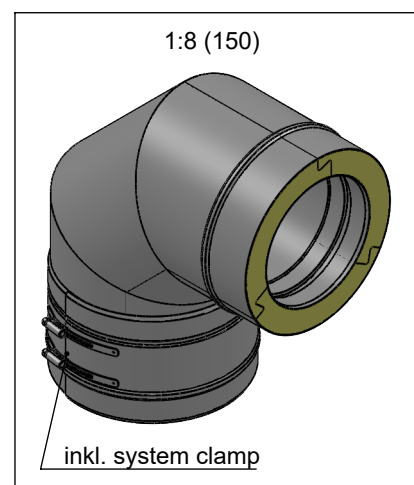
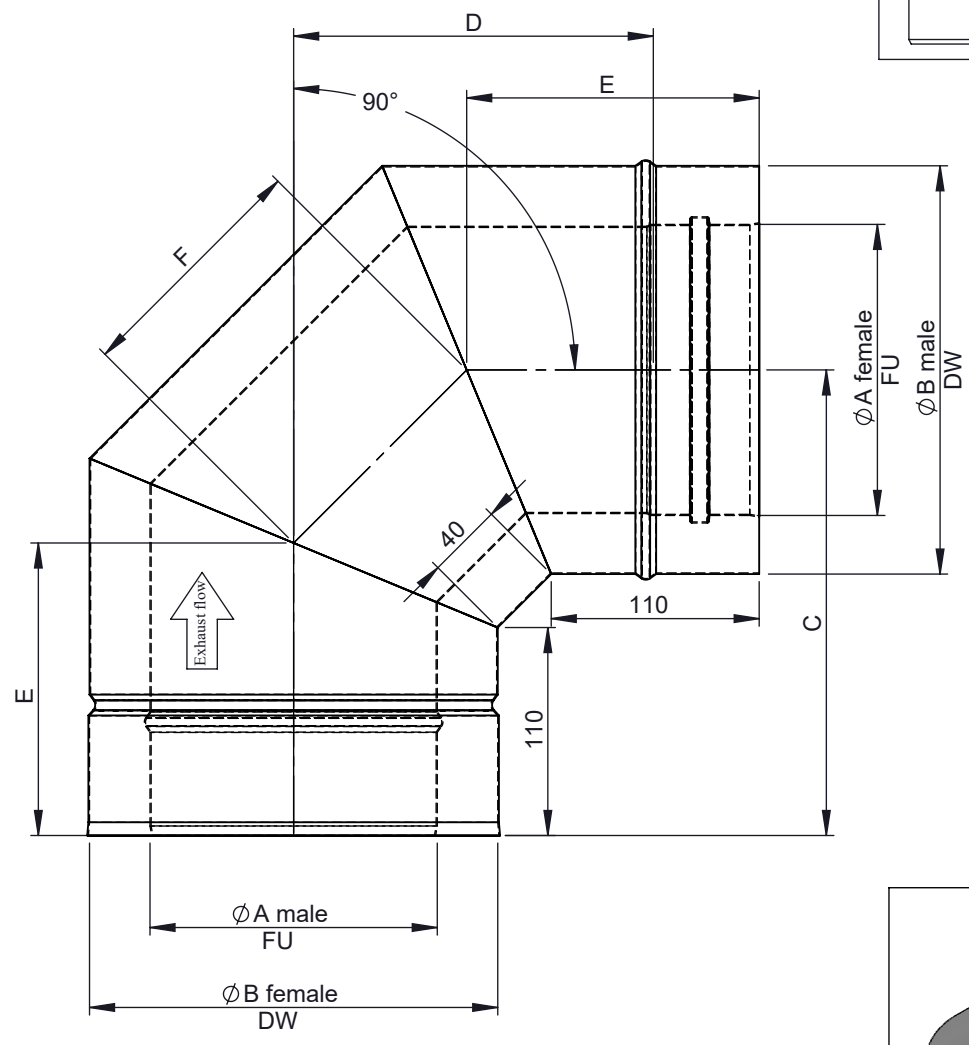
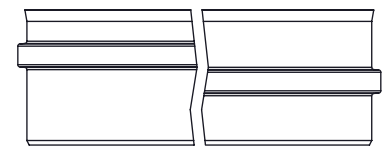


Possible type of female part "FU"



Ø	080	100	110	115	120	125	130	140	150	160	180	200	225	250	300	350	400	450	500	550	600	650
A	80	100	110	115	120	125	130	140	150	160	180	200	225	250	300	350	400	450	500	550	600	650
B	145	165	175	180	185	190	195	205	215	225	245	265	290	315	365	415	465	515	565	615	665	715
C	211	221	226	229	231	234	236	241	246	251	261	271	284	296	321	346	371	396	421	446	471	496
D	155	165	170	173	175	178	180	185	190	195	205	215	228	240	265	290	315	340	365	390	415	440
E	140	144	146	148	149	150	151	153	155	157	161	165	170	175	186	196	207	217	227	238	248	258
F	100	109	113	115	117	119	121	125	129	134	142	150	161	171	192	212	233	254	274	295	316	337
kg	2	2,4	2,7	2,8	2,9	3	3,1	3,4	3,6	3,9	4,4	5	5,8	6,6	8,3	10,2	12,2	14,5	16,9	19,5	22,2	25,2

notes:
ENCD

DIN ISO 13920 Tolerances B	
revisions-no. A2	mm / kg
date	name
drawn by 05.11.20	JMA
checked by 05.11.20	SWA
approved by 05.11.20	JWY
modified by	

Jeremias
CHIMNEY SYSTEMS

description **Elbow 90°**

code **DW60**

drawing-no. **01-02-20-6250-000**

scale	1:4
format	A4
sheet	1 of 1