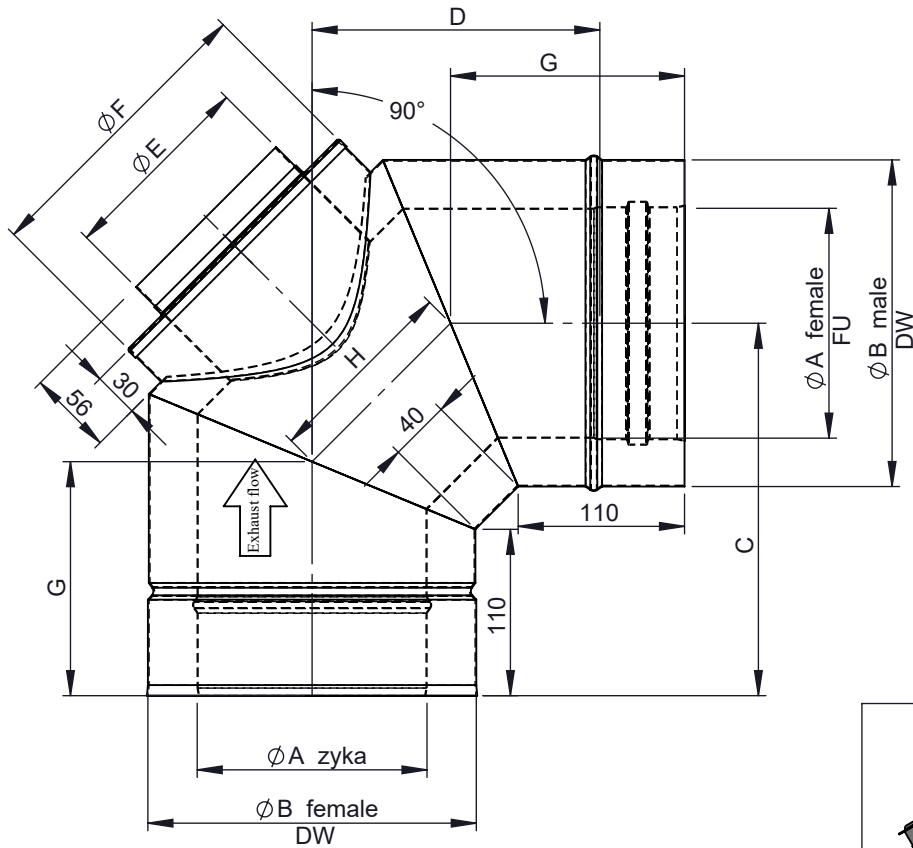
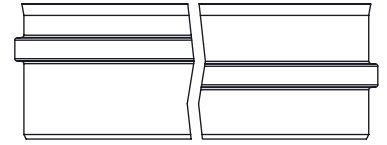
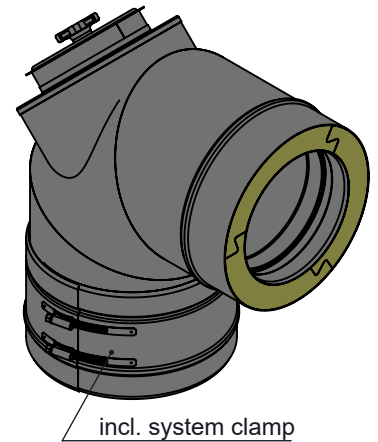


Possible type of female part "FU"



M 1:8 (Ø150)



Ø	80	100	110	115	120	130	140	150	160	180	200	225	250	300	350	400	450	500	550	600					
A	80	100	110	115	120	130	140	150	160	180	200	225	250	300	350	400	450	500	550	600					
B	145	165	175	180	185	195	205	215	225	245	265	290	315	365	415	465	515	565	615	665					
C	211	221	226	229	231	236	241	246	251	261	271	284	296	321	346	371	396	421	446	471					
D	155	165	170	173	175	180	185	190	195	205	215	228	240	265	290	315	340	365	390	415					
E	80	100				130				150				180				200				250			
F	145	165				195				215				245				265				315			
G	140	144	146	148	149	151	153	155	157	161	165	170	175	186	196	207	217	227	238	248					
H	101	109	113	115	117	121	125	129	134	142	150	161	171	192	212	233	254	274	295	316					
kg	2,5	3,0	3,3	3,4	3,5	3,9	4,1	4,4	4,8	5,4	6,0	6,9	7,8	9,7	13,0	15,8	18,6	21,5	24,7	28,1					

notes:

DIN ISO 13920 Tolerances B

revisions-no.

03

mm / kg

Jeremias[®]
CHIMNEY SYSTEMS

scale

1:5

format

A4

sheet

1 of 1



date name

drawn by 20.01.22 AKO

checked by 20.01.22 SWA

approved by 20.01.22 JWY

modified by 21.11.23 KOS

description Elbow 90° with inspection opening (201-600°C/N1), round door, incl. locking band

code DW19G

drawing-no. 01-02-20-6594-000