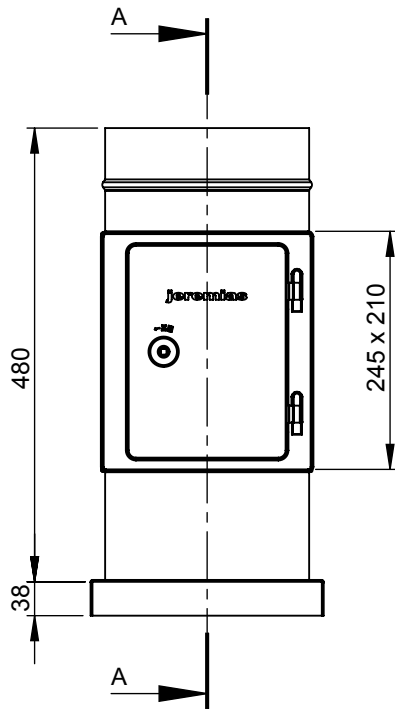
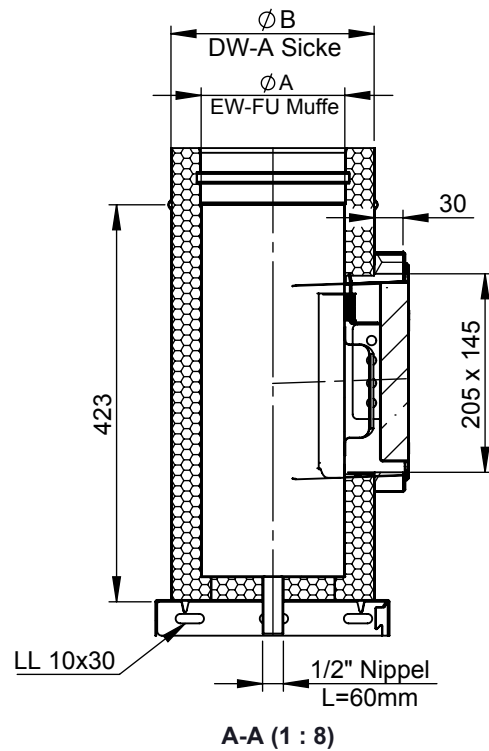


A

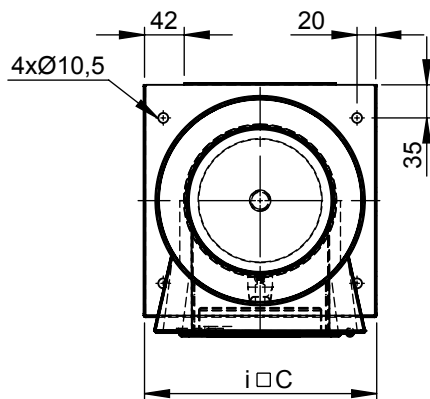


B



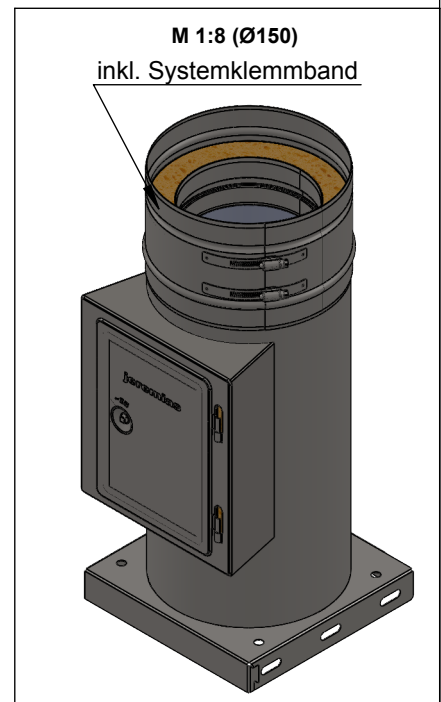
A-A (1 : 8)

C




D

E



F

Ø	080	100	115	130	150	160	180	200	225	250	300	350	400	450	500	600										
A	80	100	115	130	150	160	180	200	225	250	300	350	400	450	500	600										
B	145	165	180	195	215	225	245	265	290	315	365	415	465	515	565	665										
C	215	215	215	225	245	255	275	295	320	345	395	445	495	545	595	695										
t _{GP}	1,0						1,5			2,0																
t _i / t _a	0,6 / 0,6																									
kg	6,5	6,9	7,2	7,7	8,2	8,5	9,1	9,6	10,9	11,2	13,6	16,4	18,6	20,9	23,3	28,4										
material: inside/outside	1.4404 / 1.4301 (316L / 304)		surface: inside/outside		2B / 2R (3C / 3D)		DIN ISO 13920 Tolerances B									scale		1:8								
					revisions-no.		A5		mm / kg		 CHIMNEY SYSTEMS						format		A4							
notes:					date		name		description Grundplatte mit Kondensatablauf unten mit Ablauf 1/2" Nippel l=60mm und Reinigung mit Stellblech, Kasten und Tür 210x140mm, l=480mm, 600°C/N1, zur Montage auf Wandstütze								sheet		1 of 1							
					drawn by		30.01.2018										KAB		code		DW383					
					checked by														drawing-no.		02-20-1122-000					
					approved by																					
					modified by		13.08.2018		KAB																	