

A

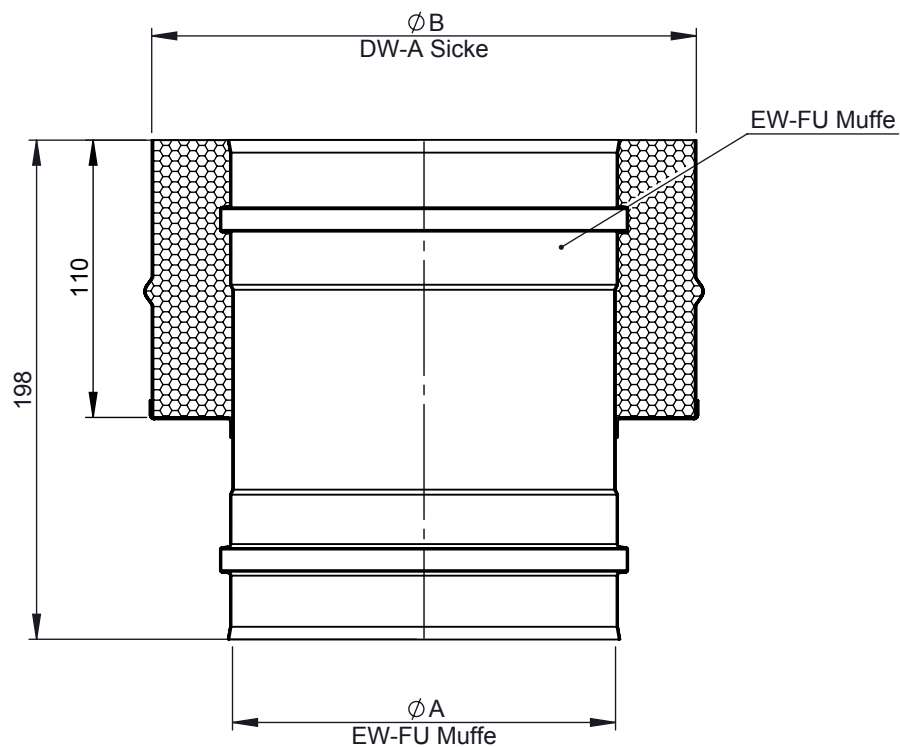
B

C

D

E

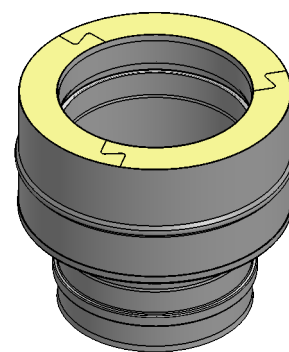
F



EW-FU Muffe

 $\text{ØB}$   
DW-A Sicke
110  
198
 $\text{ØA}$   
EW-FU Muffe

M 1:6 (Ø150)



Ø	080	100	110	115	120	125	130	140	150	160	180	200	225	250	300	350	400	450	500	550	600
<b>A</b>	80	100	110	115	120	125	130	140	150	160	180	200	225	250	300	350	400	450	500	550	600
<b>B</b>	145	165	175	180	185	190	195	205	215	225	245	265	290	315	365	415	465	515	565	615	665
<b>kg</b>	0,76	0,9	0,97	1,01	1,04	1,08	1,11	1,18	1,25	1,32	1,46	1,6	1,78	1,96	2,31	2,66	3,02	3,37	3,72	4,08	4,43

notes:

DIN ISO 13920 Tolerances B

revisions-no.

A1

mm / kg

date

24.04.2018

name

KAB

checked by

approved by

modified by


  
CHIMNEY SYSTEMS

description Übergang EW-FU-Muffe - DW-FU

code DW37M

drawing-no.

01-02-20-3019-000

scale

1:3

format

A4

sheet

1 of 1

