

A

B

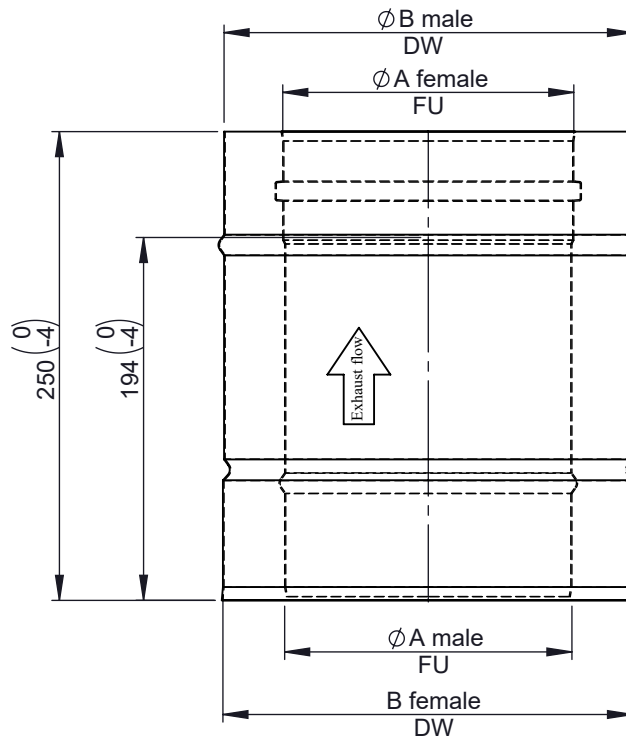
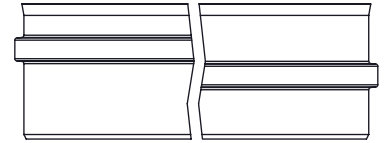
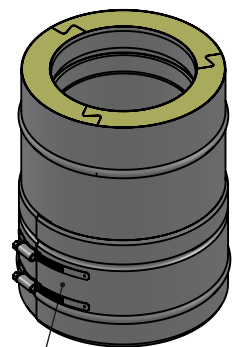
C

D

E

F

Possible type of female part "FU"

1:8 ($\varnothing 150$)

Incl. system band

\varnothing	80	100	110	115	120	125	130	140	150	160	180	200	225	250	300	350	400	450	500	550	600	650
A	80	100	110	115	120	125	130	140	150	160	180	200	225	250	300	350	400	450	500	550	600	650
B	145	165	175	180	185	190	195	205	215	225	245	265	290	315	365	415	465	515	565	615	665	715
kg	1,4	1,6	1,7	1,8	1,8	1,9	2,1	2,2	2,3	2,5	2,7	3	3,3	3,9	4,4	5	5,6	6,1	6,7	7,2	7,8	

notes:

DIN ISO 13920 Tolerances B

revisions-no.

	date	name
drawn by	12.09.20	JAD
checked by	12.09.20	SWA
approved by	12.09.20	JWY
modified by		

Jeremias [®] ₃
CHIMNEY SYSTEMS

description Pipe length 250 mm

code **DW15 \varnothing** drawing-no. **02-20-4200-000**

scale

1:4

format

A4

sheet

1 of 1

