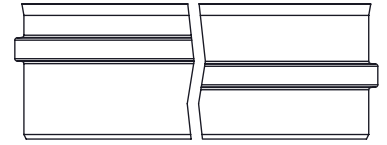


Possible type of female part "FU"



A

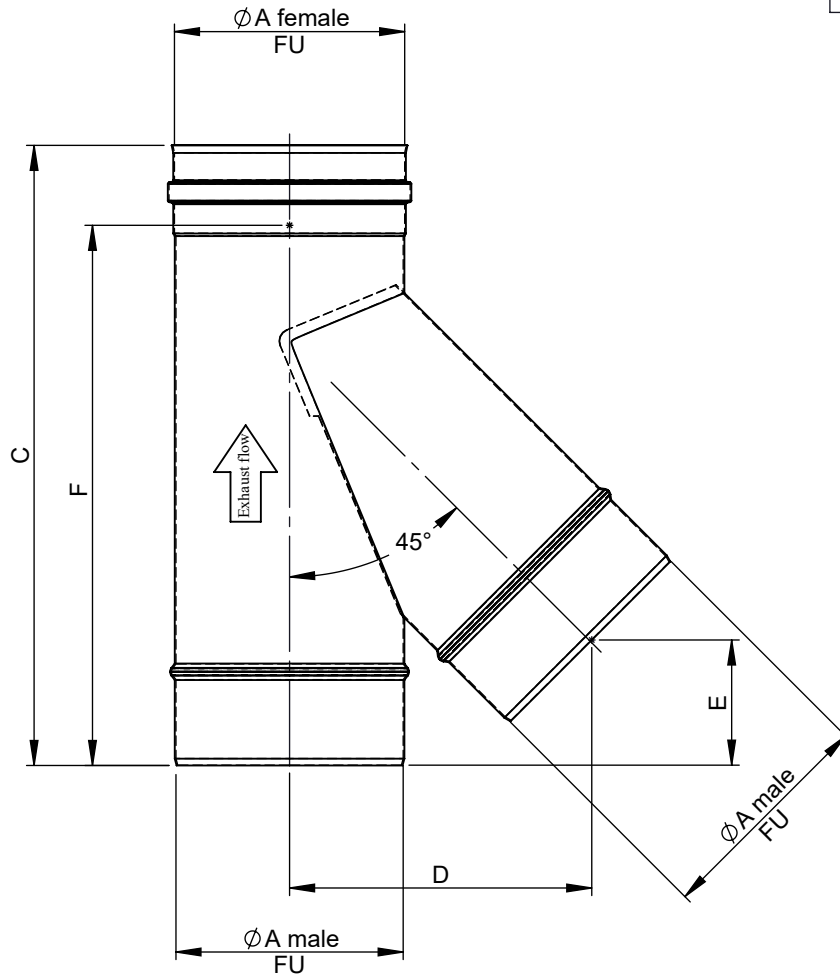
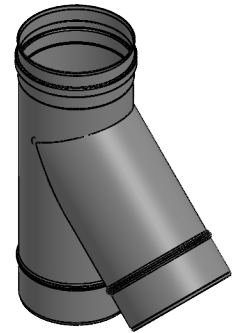
B

C

D

E

F

1:10 ($\varnothing 150$)

\varnothing	060	080	090	100	110	115	120	125	130	140	150	160	180	200	225	250	300	350	400	450	500	550	600
A	60	80	90	100	110	115	120	125	130	140	150	160	180	200	225	250	300	350	400	450	500	550	600
C	275	310	328	335	355	355	365	346	380	390	410	420	450	480	510	550	615	685	755	825	895	970	1045
D	120	138	147	155	164	168	173	177	181	190	199	207	224	241	262	284	326	369	412	454	497	540	582
E	47	57	63	63	69	67	70	59	74	76	82	84	92	100	106	117	132	149	166	184	201	221	241
F	218	253	271	278	298	298	308	289	323	333	353	363	393	423	453	493	558	628	698	768	838	913	988
kg	0,5	0,7	0,9	1	1,1	1,2	1,2	1,3	1,4	1,6	1,7	1,9	2,2	2,6	3,1	3,7	5	6,4	8	9,8	11,7	13,9	16,3

notes:

DIN ISO 13920 Tolerances B

revisions-no.

date name

drawn by 24.10.20 JMA

checked by 24.10.20 SWA

approved by 24.10.20 JWY

modified by 09.11.21 AKO

CHIMNEY SYSTEMS

description 45° Tee with condensate drain edge (TIG welded), male branch

code **FU16**drawing-no. **01-20-2021-000**

scale

1:10

format

A4

sheet

1 of 1

